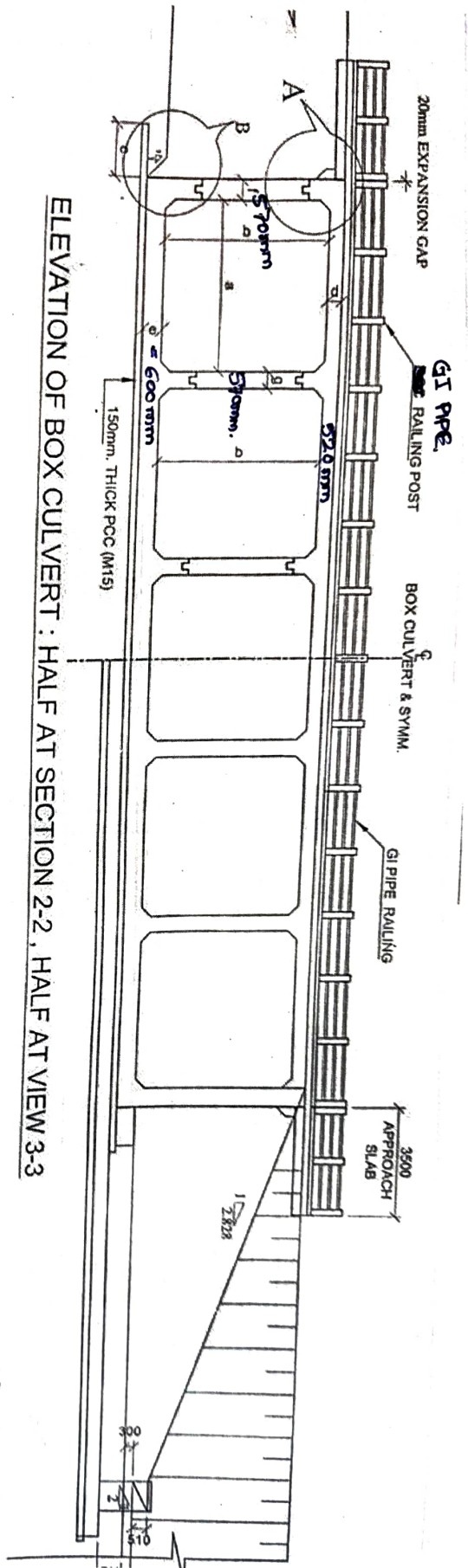


PLAN AT ROAD LEVEL

[Signature]
 Assistant Engineer
 Irrigation Panchayat Sub Division
 Jasdán



ELEVATION OF BOX CULVERT : HALF AT SECTION 2-2, HALF AT VIEW 3-3

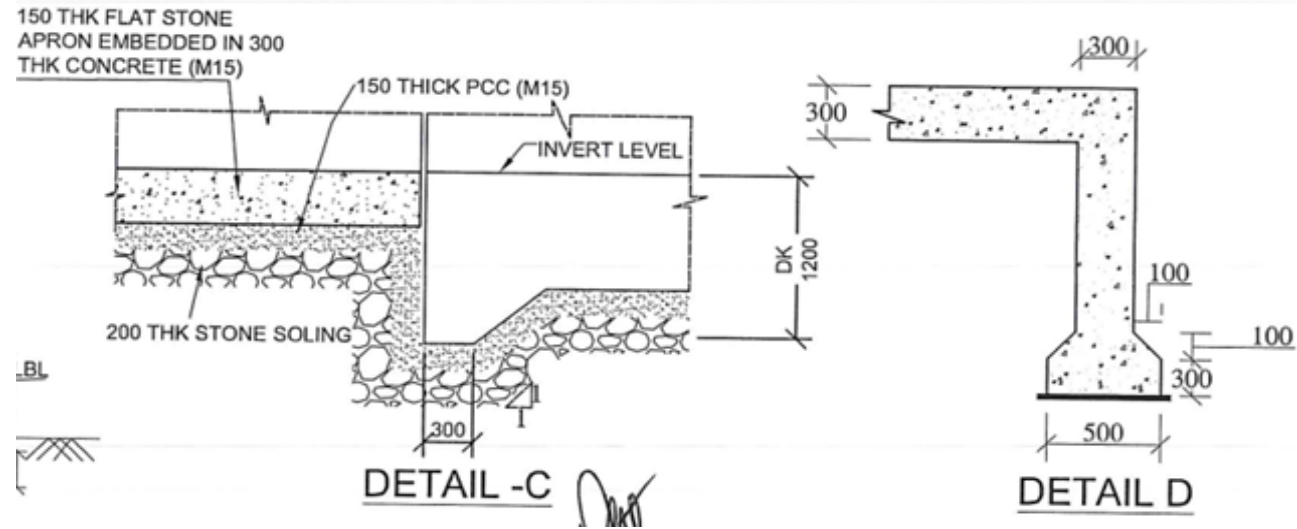
TABLE SHOWING SALIENT DIMENSIONS OF FIVE CELL BOX CULVERT

Box Cell Designation	a (mm)	b (mm)	c (mm)	d (mm)	e (mm)	f (mm)	g (mm)	Design base Pressure t/m^2
5 m x 4 m	5000	4000	N/A	400	550	550	450	10
5 m x 5 m	5000	5000	N/A	450	600	600	500	10
5 m x 6 m	5000	6000	N/A	500	650	650	550	10
6 m x 5 m	6000	5000	N/A	550	680	680	550	10
6 m x 6 m	6000	6000	N/A	575	700	700	600	10

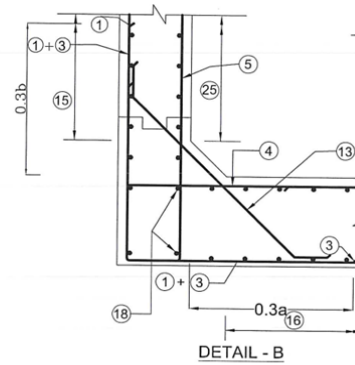
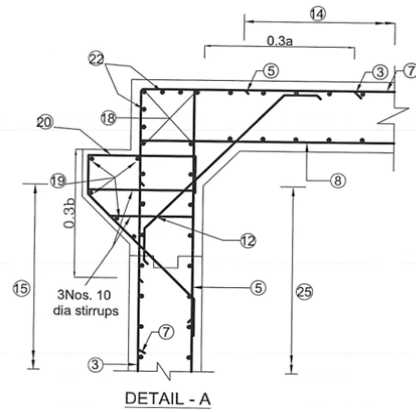
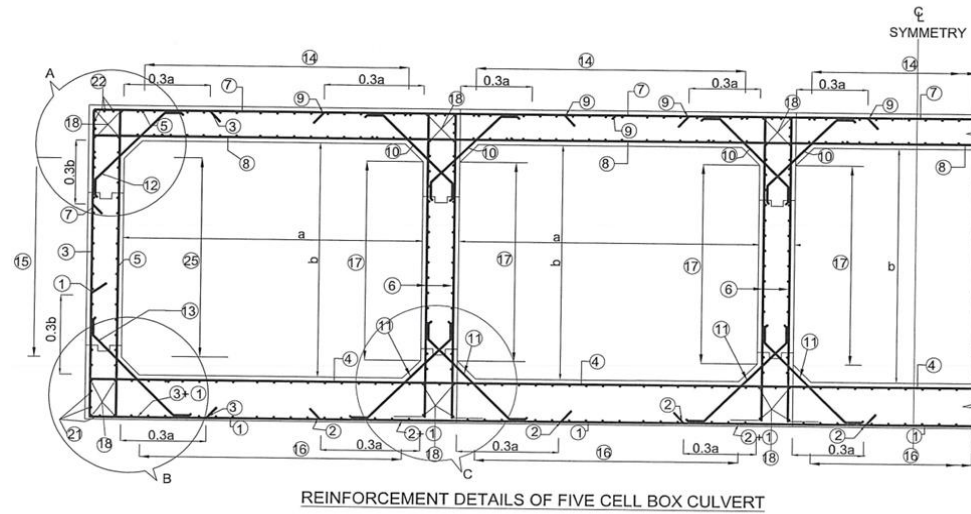
Note: The bed slab (top level) shall be kept 1 m below the lowest bed level.

- Box Cell Section's as per NORTH.
- Adopted.

Assistant Engineer
Irrigation Panchayat Sub Division
Jasdan

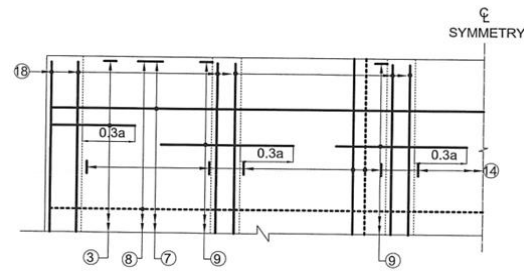


Assistant Engineer
Irrigation Panchayat Sub Division
Jasdan

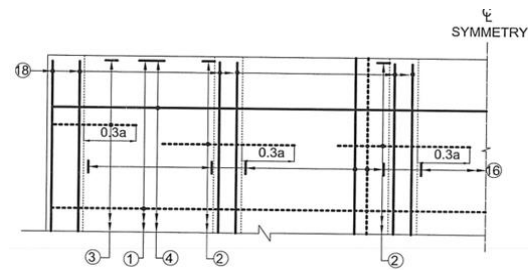


LEGEND:
 — : TOP FACE BARS / OUTER FACE BARS
 - - - : BOTTOM FACE BARS / INNER FACE BARS

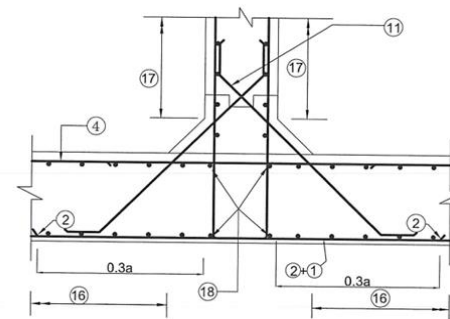
Assistant Engineer
 Irrigation Panchayat Sub Division
 Jasdan



TOP SLAB R/F PLAN
(KERBS, HAUNCH, BAR MARKS 5 AND 22 NOT SHOWN)



BOTTOM SLAB R/F PLAN
(BAR MARKS 5 AND 21 NOT SHOWN)



DETAIL - C

Assistant Engineer
Irrigation Panchayat Sub Division
Jasdan